

Bullet evaluation

Caliber	223 Rem
Bullet	55 gr Barnes TTSX
MV	3100 ft/s
Distance	65 yards
Dead run	30 yards

This deer managed to run 30 yards even though the bullet crushed the right foreleg bone (at the ball joint) and must have passed close to the autonomic plexus. The animal was quartering so the bullet only passed through bone on one side. Even after hitting heavy bone (see picture on next slide) the bullet must have kept together leaving only a small exit hole (and limited destruction of the lungs). There are two exit holes on the lungs and my assessment is that the second hole is caused by bone fragment and not by bullet fragment.

Entrance, quatering



Lungs, entrance side



Exit



Lungs, exit side



Entrance (quatering)



Entrance



Exit



Exit



Caliber	223 Rem
Bullet	55 gr Barnes TSX
MV	3100 ft/s
Distance	150 yards
Dead run	50 yards

I took the shot a bit too far back to be optimal and the deer was also slightly quartering. When gutting the lungs got a bit damaged but you can see the limited effect the bullet has had. The exit wound is small and the bullet most likely was intact.

Entrance



Lungs



Entrance



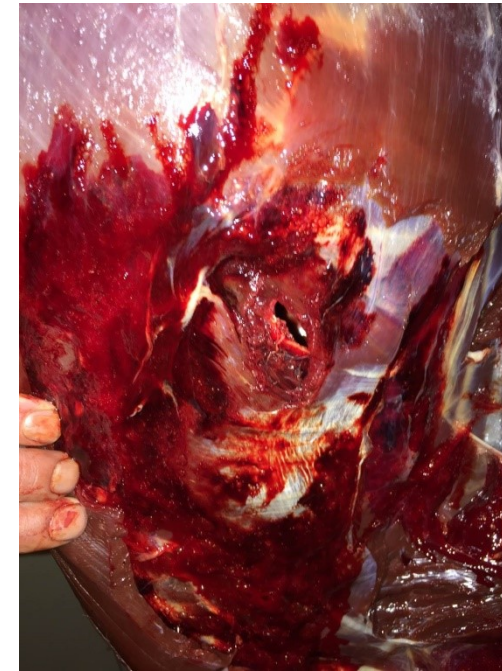
Entrance



Exit

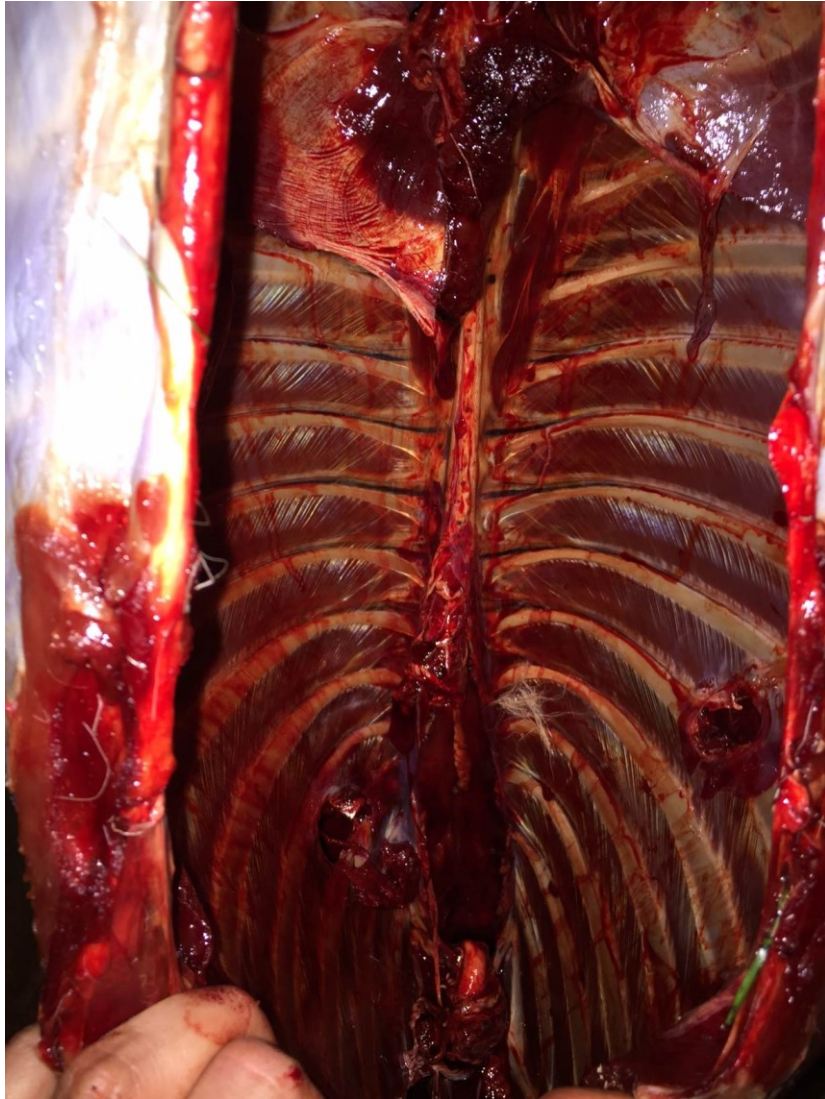


Exit



Entrance side

Exit side



Three 8 mm 200 gr Barnes TSX bullets taken from moose shoot at ranges from 15 to 125 yards with 8x57 IS (MV 2500 ft/s)

